



## 2019 EARLY BIRD REGATTA

NIANTIC BAY YACHT CLUB  
SATURDAY JUNE 1, 2019

### SAILING INSTRUCTIONS



Hosted by the Niantic Bay Yacht Club, the Organizing Authority (OA) is the Niantic Bay Yacht Club. Niantic Bay Yacht Club is located at 8 Shore Road, Niantic, CT 06357. Phone number is 860 739 0558. VHF channel 72. Club and Event information is available at [www.nbyc.org](http://www.nbyc.org).

#### 1. RULES

- 1.1. This event will be governed by the rules as defined in *The Racing Rules of Sailing*, including *Appendix V (Alternative Penalties)*
- 1.2. The Class Rules in effect are the rules of PHRF handicap, and of applicable One Design Classes.
- 1.3. This event is an ECSA Series Points Regatta. See ECSA Series for Rules and Qualifications.
- 1.4. This event is a Pre-Soundings Cup Series Points Regatta. Qualification requires finishing both the Early Bird and Thames YC's Commodore's Trophy Race. **See 16.4 for Pre-Off Soundings scoring.**

#### 2. NOTICES TO COMPETITORS

- 2.1. Notices to competitors will be posted on the official bulletin board(s) located in the Clubhouse adjacent to the fireplace, and will be announced on channel 72 at 1045 hours on the day of the race noted above.

#### 3. CHANGES TO THE SAILING INSTRUCTIONS

- 3.1. Any changes to the Sailing Instructions will be posted before 1000 on the day of the race noted above, and may be announced on VHF Ch. 72 prior to the first warning.

#### 4. SIGNALS MADE ASHORE

- 4.1. Signals made ashore will be displayed at the Clubhouse flag pole.
- 4.2. Code flag AP with two guns means, "Racing is postponed". The warning signal will be made not less than 30 minutes after flag AP is lowered (with one horn).
- 4.3. Code flag B (or a red flag) fully hoisted with one horn or gun means; "Protest period has begun." When lowered, it means; "The protest period has ended."

#### 5. SCHEDULE OF RACES

- 5.1. Warning for the first race: 1200 (followed by other Classes)
- 5.2. Competitors shall check-in with the Race Committee prior to the warning of the first race by sailing past the stern of the RC Signal vessel and hailing their sail number and number of persons onboard.
- 5.3. If multiple races are scheduled, The RC Signal vessel will fly the 2nd Substitute.
- 5.4. Warning for any subsequent races will occur after all boats in a class have finished or are no longer competing in their preceding race.
- 5.5. No warning signals will be made after 1600.

#### 6. CLASS FLAGS

Class 1: Numerical Pennant "1"

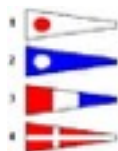
Class 2: Numerical Pennant "2"

Class 3: Numerical Pennant "3"

Class 4: Numerical Pennant "4"

Atlantic Class: Atlantic Class Flag

Ensign Class: Ensign Class or Fleet Flag



(white background with red circle)

(blue background with white circle)

(red, white, blue vertical stripe)

(red background with white cross)

**7. RACING AREA RESTRICTIONS**

7.1. All yachts shall pass to the East of Three Foot Rock, C “7”.

**8. THE COURSES**

- 8.1. The course for each race for each Class will be posted on the signal board on the starboard side of the RC Signal vessel prior to the Warning for that Class.
- 8.2. The Class will be displayed followed by a space, then followed by the course for that class.
- 8.3. The courses will be displayed as the series of marks in the sequence in which they shall be rounded (i.e., “1 HW” means Class 1 starts, rounds H, rounds W, then goes to finish).
- 8.4. Any numeral inserted in the displayed course (except “8”) indicates the number of times the preceding sequence shall be repeated (i.e., AL2 means AL then AL again). Ditto (“”) marks mean; “same course as the course listed immediately above.”
- 8.5. Leave all marks to Port EXCEPT if a Green Flag is displayed on the RC Signal vessel which means; “Leave all marks to Starboard”.
- 8.6. If (and only if) Mark H is listed on the course immediately before and/or immediately after mark 8, H is a Control Gate rather than a turning mark (i.e, ...8HW..., or ...H8W...). If so listed, boats shall pass between H and Hatchett Reef R”6” (rather than rounding H). This will allow for shortening the course to H if weather conditions so require.
- 8.7. Boats shall keep clear of the start and finish lines unless starting or finishing. A boat that breaks this rule is exonerated if she takes a Two-Turns Penalty (see rule 44.2). This changes rule 28.1.

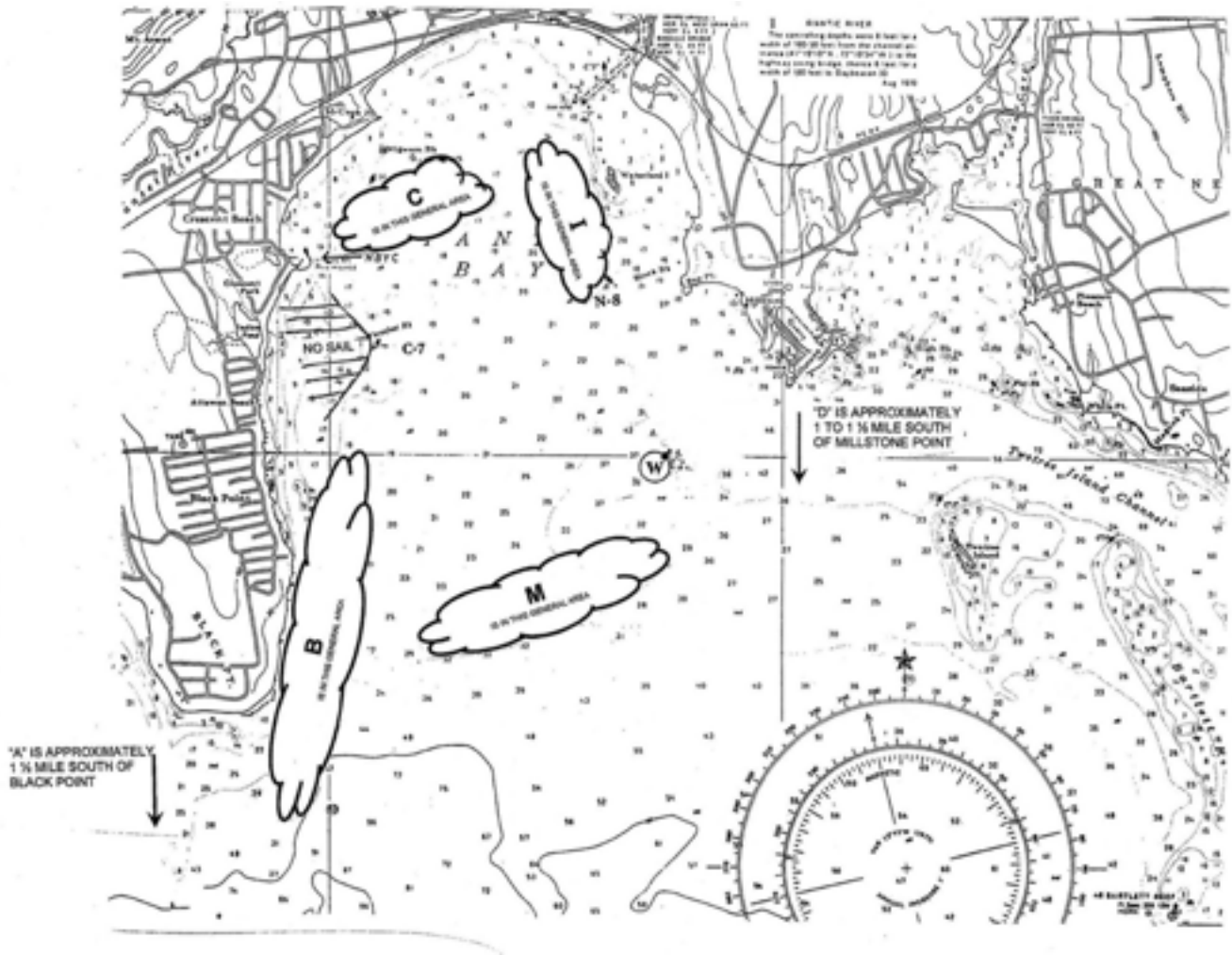
**9. MARKS**

- 9.1. All marks other than Government Marks will be orange or yellow inflatable marks.
- 9.2. If the first mark is NOT a government mark, the approximate magnetic bearing from the starting line to the first mark will be displayed at the bottom of the course board on the RC Signal vessel.
- 9.3. The Race Committee will provide location of Mark H, if used, on the official race VHF channel 72. Failure to announce or hear the announcement will not be considered cause for redress.
- 9.4. Marks of the course are designated as follows:

8	Bell R”8” south of the Connecticut River
A	Inflatable approximately 1 ½ miles South of Black Point
B	Inflatable in vicinity of Black Point (see chart attached)
C	Inflatable in the vicinity of Crescent Beach (see chart attached)
D	Inflatable approximately 1 to 1 ½ miles South of Millstone Point
H	Inflatable SSE of R”6” Hatchett Reef (position announced). May be a turning mark or a Control Gate. See 8.1 above
I	Inflatable in the vicinity of Waterford Island (see chart attached)
L	Inflatable approximately ½ mile to leeward of the finish line
M	Inflatable located in the Middle of the Bay between Black Point and White Rock (see chart attached)
O	Orange inflatable mark to weather of the starting line
S	Bell R ”4” approximately 1 mile south of Bartlett’s Reef
W	Bell R “6” south of White Rock
Z	Mo(A) “PI” located approximately 2 miles north of Plum Island

**10. THE START**

10.1. Races will be started using Rule 26 (5-minute sequence) using either an automated horn or



shotgun.

- 10.2. The starting line will be between the pole flying an orange flag on the RC Signal vessel and an inflatable mark.
- 10.3. Stand-off buoys (pink or orange balls) may be used at the RC Signal vessel. A stand-off buoy is considered an extension of the RC Signal vessel and boats may neither touch them nor sail between a stand-off buoy and the RC Signal vessel
- 10.4. The starting sequence of classes will be in their order displayed starting at the top of the RC Signal vessel's starboard side signal board. Classes recalled will be restarted prior to starting the next class.

## 11. THE FINISH

- 11.1. The finish will be in the general area of the start, but may be relocated from the start line to afford a better final leg.
- 11.2. The finishing line will be between an inflatable mark, and the course side of the RC Signal vessel's mast which is flying an orange flag.
- 11.3. As an alternate to the RC Signal vessel, another RC vessel flying a Race Committee flag and displaying an orange or yellow line flag may be used at the finish line.

## 12. SHORTENING COURSE

- 12.1. The course may be shortened for one or more classes only, or for all classes. If shortening of a course for all classes, only the flag "S" will be displayed. If the shortening of a course does not apply to all classes, the flags of those classes for which the shortened course applies will be displayed with flag "S".

## 13. PENALTY SYSTEM

- 13.1. Appendix V will apply.

## 14. TIME LIMIT

- 14.1. The first boat to finish in any given class shall finish no later than 1700 or that race will be abandoned.

14.2.Any boat finishing any race later than 1730 will be scored DNF.

## 15.PROTESTS AND REQUESTS FOR REDRESS

15.1.Protest forms are available at the Clubhouse.

15.2.Protests shall be delivered at the Clubhouse within the protest time limit.

15.3.The protest period will begin with the raising of a red flag when the RC Signal vessel returns to the dock and ends one hour later indicated by the removal of the flag.

## 16.SCORING

16.1.Scoring for PHRF classes will be based on lowest corrected time using the “time-on-time” scoring system utilizing ECSA-PHRF TCF formula:  $650/(500 + \text{PHRF})$  ratings.

16.2.If more than 1 race is completed for any class, scoring for that class will be determined using the Appendix A Low Point system, except that no races will be excluded (changes Appendix A).

16.3.Any boat withdrawing from any race will be scored DNF for the series

16.4.Scoring for the Harkness Pre-Off Soundings Trophy will be based on best combined points for the Early Bird and Commodore's Trophy Race using points as awarded on the ECSA scoring matrix.

## 17.SAFETY REGULATIONS

For purposes of safety and so that the Race Committee knows the status of competitors, a competitor who withdraws during a race should notify the Race Committee on Channel 72, or should notify the NBYC Club Manager on Channel 72 or 860-739-0558.

## 18.OFFICIAL VESSELS

Official RC vessels will display a Race Committee flag.

## 19.RADIO COMMUNICATIONS

The Race Committee will utilize VHF channel 72 for race communications.

## 20.PRIZES

The top 3 finishers in each class will receive trophies at the Awards Party following racing at Niantic Bay Yacht Club.

## 21.DISCLAIMER OF LIABILITY

Competitors participate in the regatta entirely at their own risk (see Rule 4, Decision to Race). The organizing authority will not accept any liability for material damage or personal injury sustained in conjunction with or prior to, during, or after the regatta.

## 22.CONTACT

OA/Regatta Chair:	Pam Manthous	manthousfamily@gmail.com	203-500-8056 Cell
Club Manager:	Bob Austin LaFrance	manager@nbyc.org	860-739-0558
Chief Judge	xxx	xxx	xxx
Principal Race Officer*	Judy Gibbs	gibbsjudy375@gmail.com	xxx

(\*This changes the Notice of Race)